

# make space table ROUND

- 18" • 24" • 30" • 36" • 42" Round Table Tops
- Available in 16" or 21" heights.
- 1 ¼" High density laminate top.
- Standard Wilsonart® Table top finishes with matching edge: White Driftwood, Carter Oak, Designer White, Kensington Maple, Fonthill Pear, Wild Cherry, Montana Walnut, Empire Mahogany, Cafelle, or Black.
- 1½" round or square steel legs with black insert glides and welded connecting plates.
- Choose Black, Chrome, or Silver Metallic finish legs.
- CAUTION! Do not sit or stand on tables.



model #  
MS30R MLSC AHG

## pricing

### Table Round 16" & 21" height

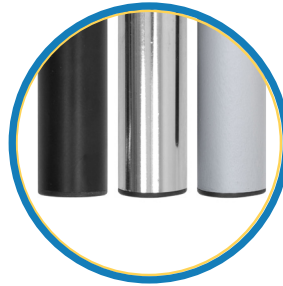
	Model #	Description	List Price	Freight
	MS18R	18" Round, 16" Height	480	UPS
	MT18R	18" Round, 21" Height	480	UPS
	MS24R	24" Round, 16" Height	485	UPS
	MT24R	24" Round, 21" Height	485	UPS
	MS30R	30" Round, 16" Height	653	UPS
	MT30R	30" Round, 21" Height	653	UPS
	MS36R	36" Round, 16" Height	666	LTL
	MT36R	36" Round, 21" Height	666	LTL
	MS42R	42" Round, 16" Height	686	LTL
	MT42R	42" Round, 21" Height	686	LTL

# make space table ROUND

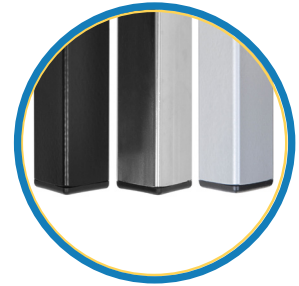
When ordering you must specify:

- 1) Complete model #
- 2) Table top finish and edge finish
- 3) Leg shape and finish

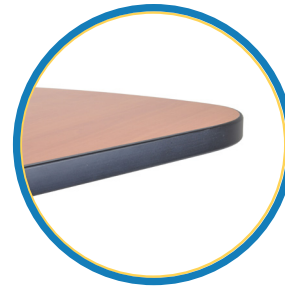
Then you may add additional option codes.



Round Leg



Square Leg



Contrasting Edge

## options & upgrades

Code	Description	List Price
<b>TABLE TOP FINISH</b>		
Standard Choices with matching edge:		
	Black, Carter Oak, Designer White, Empire Mahogany, Fonthill Pear, Kensington Maple, Montana Walnut, Wild Cherry	N/C
SL	Wilsonart® laminate finishes ending with code 60 are available standard choices.	N/C
UL	Upgrade laminate choices, call for pricing.	CFP
CE	Contrasting Black 3mm edge.	N/C
UE	Upgrade contrasting edge. Any color other than black.	CFP
<b>LEGS - Set of 4</b>		
MLRB	Round Leg BLACK finish.	N/C
MLRC	Round Leg CHROME finish.	\$26
MLRSM	Round Leg SILVER METALLIC finish.	N/C
MLSB	Square Leg BLACK finish.	N/C
MLSC	Square Leg CHROME finish.	\$26
MLSSM	Square Leg SILVER METALLIC finish.	N/C
<b>GLIDES</b>		
AHG	Adjustable height glides.	\$42
AHGV	Adjustable height VCT Floor saver glides. Prevents damage to VCT tile. Not for use on carpet.	\$62

make space collection - round table

